



M J REALTY

SOLUTION MADE EASY

We makes people invest in open land and richer by in future.
Open plots can't lost or stolen, as a reputed Land banker
in Navi Mumbai we gives surety to our prospect clients that purchased
with reasonable care then it is the most safest investment in the world.

NAINA and the CIDCO plan

So when you come to **MJ REALTY** then our top priority is to ease
all insecurities about land investment.



NAINA and the CIDCO plan

Town planning scheme 1 & 4.(TPS 1 & TPS 4)

NAINA and the CIDCO plan

2.5 FSI

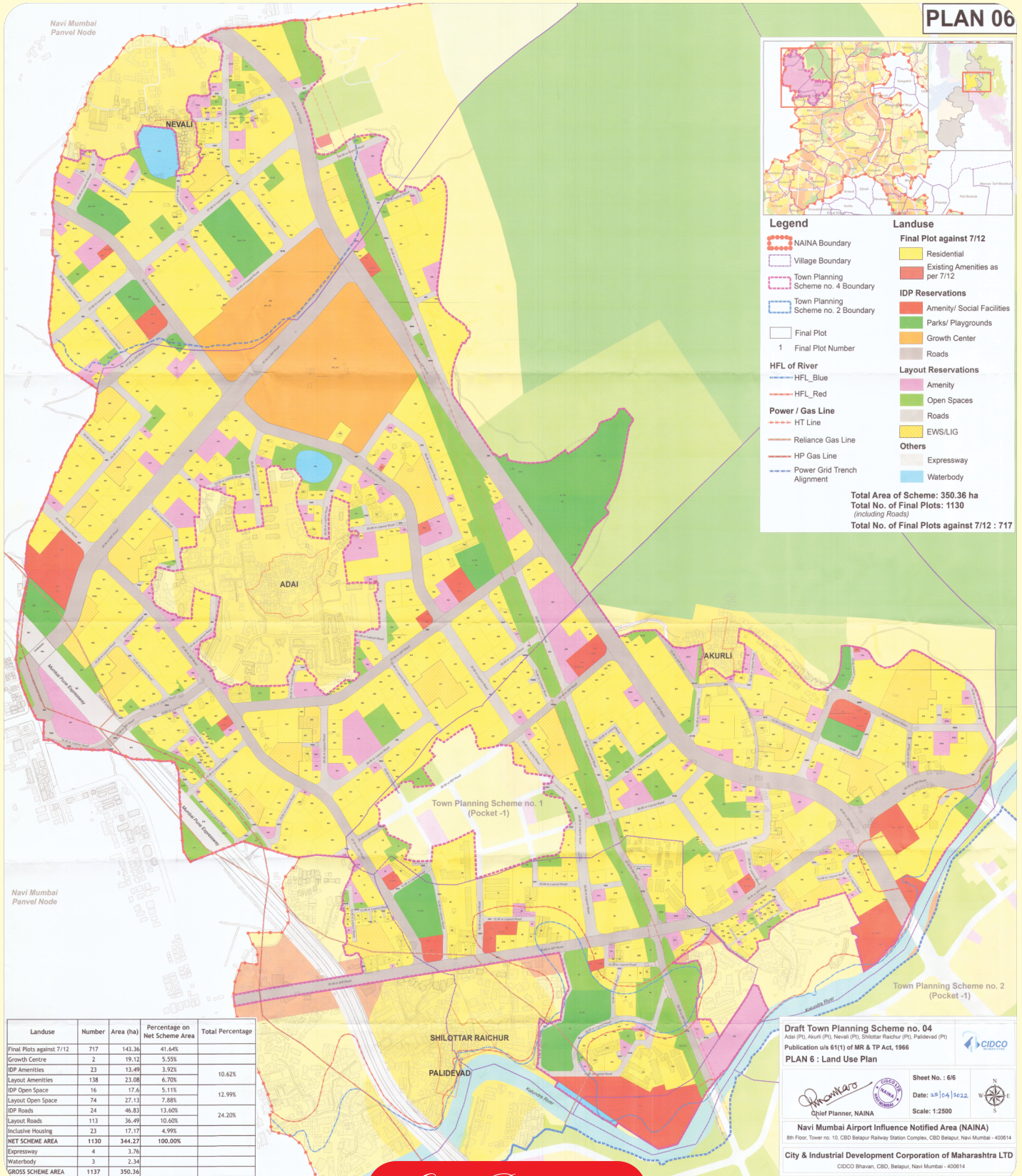


What is NAINA?

NAINA is a participatory land pooling scheme where villagers will get 40% of the developed land of the total land they surrender to develop a city in the Raigad district. The city will consist small cities that will be hubs for agro-farming, education, trade, information technology, services, medical treatment, etc. At present, **CIDCO**, which is the planning authority for NAINA is executing a pilot consisting of 23 villages in the Raigad district. Under the pilot project, CIDCO has planned 11 town planning schemes (TPS). Each TPS consists of three to four villages. CIDCO has proposed the development of **NAINA on 372 sq. km. of land from 174 village of Thane and Raigad districts.** The project is based on the principle of land consolidation. The development of **23 of these villages** mentioned in the layout of the approved Interim Development Plan will be done through 11 Town Development Plans (TDP). Land owners coming under town development plans will get 40% developed plot from their original land at **2.5 FSI.** **CIDCO** will develop roads, playground, schools, gardens, growth centers, etc. facilities over the remaining 60% land. Land owners will get 40% of their land, even if the land is affected by any reservation. This development aims to develop a sustainable city with **residential, commercial, educational, and all other basic civic facilities.**

The state government has approved the **Town Planning Scheme (TPS) No. 4, 5, 6 & 7** of **Navi Mumbai Airport Influence Notified Area (NAINA)** paving way for the infrastructure development. So far, of the total **11 TPS**, seven have been approved.

2.5 FSI



Our Projects

Adai, Akurli, Nevali, shilottar, Raichur, palidevad, Harigram and kevale



MJ REALITY

SOLUTION MADE EASY



OUR BRANCHES

VASHI | KOPARKHAIRANE